

MQuan Half-Circle 12.5"



WAL-031



MQuan Half-Circle 12.5"



WAL-031

DESCRIPTION

Using Allied Maker's bespoke hardware, Michele Quan of MQuan Studio has created a series of hand-painted stoneware backplates in her studio's signature style. The result is a collaborative version of Allied Maker's Mini Orb sconce that blends handcrafted ceramic details with meticulous engineering.

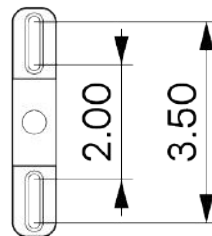
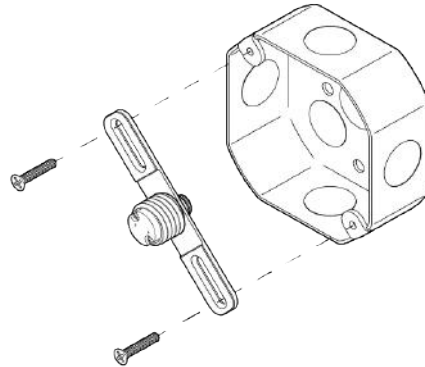
MATERIALS

Brass, Ceramic, Glass

GLASS FINISHES

Alabaster, Matte White, Opal

MOUNTING HARDWARE DIAGRAM

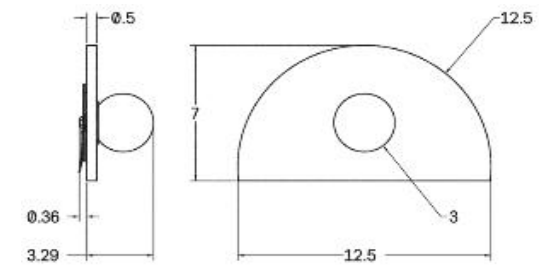


LAMPING

G8 Bi-Pin Base. Type T Lamps

BULB INCLUDED (120V USA)

Emery Allen 4.5W G8 Bulb



MOUNTING

Universal

WEIGHT

4.75 lb

CERTIFICATIONS

CE, Damp Locations, UL
and cUL Certified



DIMENSIONAL DRAWING