

Prospect Double Sconce 08"



WAL-069



Prospect Double Sconce 08"



WAL-069

DESCRIPTION

The Prospect Double Sconce was designed with an emphasis on strong joinery and great light output. Two domes are meticulously connected from a single source to spread light over a large area, and its solid brass construction withstands the outdoor elements and develops a beautiful organic patina with time.

MATERIALS

Brass, Glass

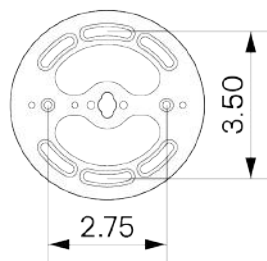
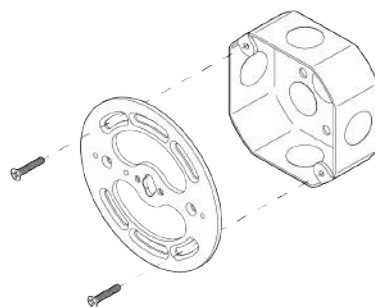
METAL FINISHES

Available in All Standard Metal Finishes

GLASS FINISHES

Clear, Frosted, Matte White, Opal, Smoked

MOUNTING HARDWARE DIAGRAM

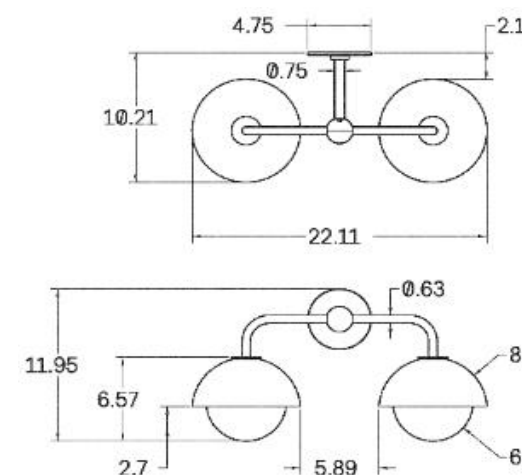


LAMPING

E26 or E27 Screw Base. Type A Lamps

BULB INCLUDED (120V USA)

Cree 60W Bulb



MOUNTING

Universal

WEIGHT

14.25 lb

CERTIFICATIONS

CE, Damp Locations, Outdoor and Wet Locations, UL and cUL Certified



DIMENSIONAL DRAWING