

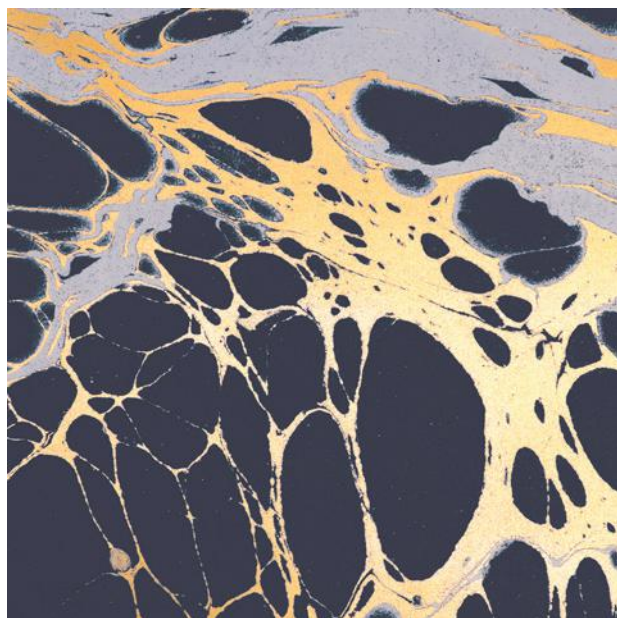
The background of the entire image is a wall covered in a marbled paper pattern. The pattern consists of dark navy blue, cream white, and mustard yellow colors swirling together in an organic, cell-like or stone-like texture. In the lower-left foreground, a modern, low-profile bench is visible. It has a dark, tufted leather-like seat and backrest, and is supported by thin, light-colored wooden legs. A cylindrical dark cushion is rolled up and placed against the backrest of the bench.

Calico

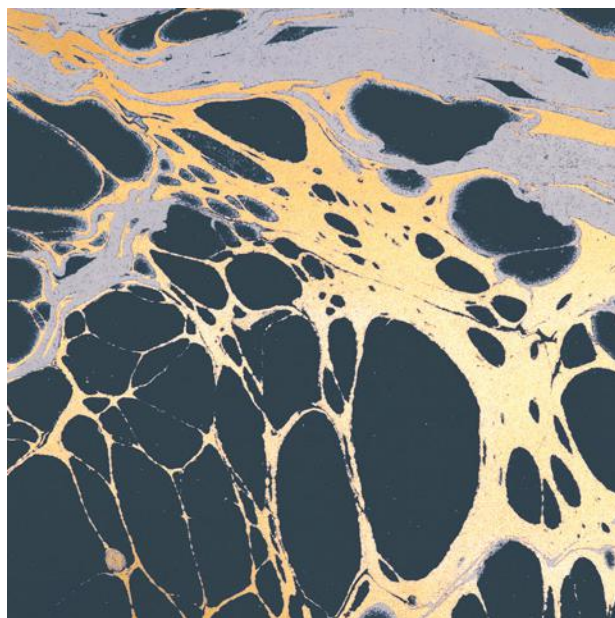
NIGHT

Tear Sheet

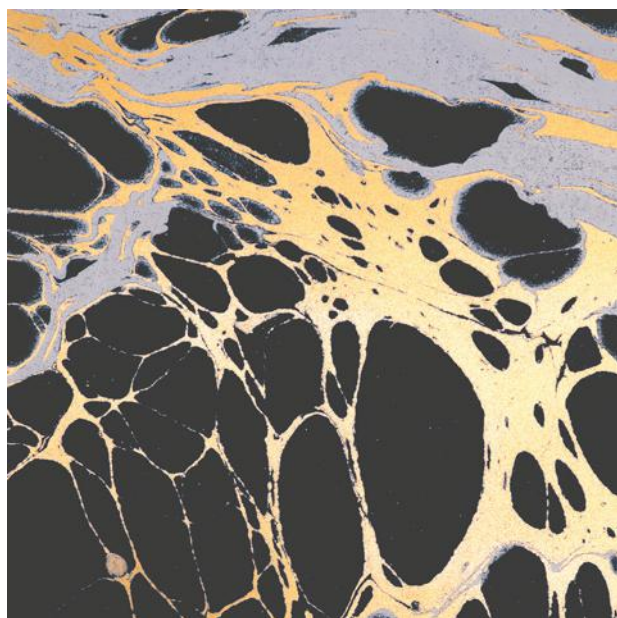
Night is an exploration of the duality of darkness and light.



AUBERGINE



INDIGO



SLATE

Night

Specifications | Commercial Substrate

Suitable for residential and commercial projects

DETAILS

Printed in panels to fit your specific space

Printed to order

Pricing available upon request

Sold by the square foot

Lead time averages 8 weeks

Rush options and custom colors available

Printed in USA

TESTING

(US) ASTM E 84 class A fire rating

(EU) EN 15102 class B, s2

(CN) CAN/ULC-S102.2 class A

CCC-W-408D type II

WA specification W-101 type II

NFPA 286 corner burn test class A

Passes ASTM G21 mold & mildew

SPECS

Type II commercial-grade vinyl substrate

Non-woven backing

Non-repeating mural

Panels trim to 52" wide, including overlap

20 oz per linear yard (620 g per linear meter)

Smooth metallic surface with reflective sheen

ENVIRONMENTAL

Low VOC per California CHPS 01350 air quality

Cadmium and lead free formulation

LEED credits eligible

INSTALLATION

Professional install recommended

Wallpaper comes untrimmed

CARE

Clean with damp cloth

triode